



Cell: +254 742 988 248 | 799 522 934

Email: sales@africapvc.com

Website: www.tembo.co.ke



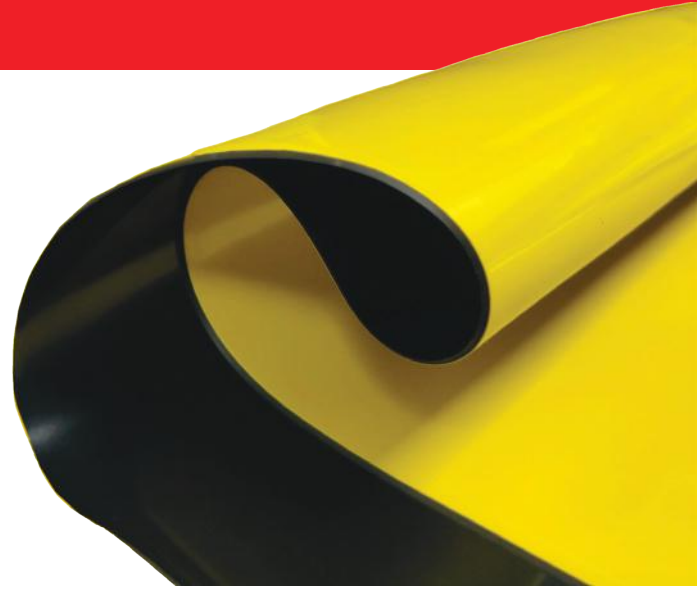
WATERPROOFING MEMBRANES

TEMBO®-UM

TEMBO®-UM is a homogeneous PVC-P membrane which is manufactured on high-quality plasticized polyvinylchloride (PVC-P).

PVC-P Membrane

The material has a top signal layer that is bright yellow to discover quickly any damage(s) to the waterproofing during its installation or transportation. The process of production is a state-of-the-art, high-tech automated line by co-extrusion on a base of high grade plasticized polyvinyl chloride (PVC-P), which ensures that the product's best qualities are maintained.



TEMBO®-UM membranes can be used for waterproofing of:

- Residential Apartments
- Commercial Offices and Warehouses
- Underground Structures: Basements, Tunnels and Underpasses
- Retail Units and Storage Areas
- Leisure facilities like Swimming pools and Stadiums
- Roofs
- Bridges, Dams and Artificial Ponds
- Elevator Pits
- Balconies
- Parking Areas



EXTRA FEATURES



Resistance to
micro-organisms



Resistance to
mechanical stress



High Chemical
stress



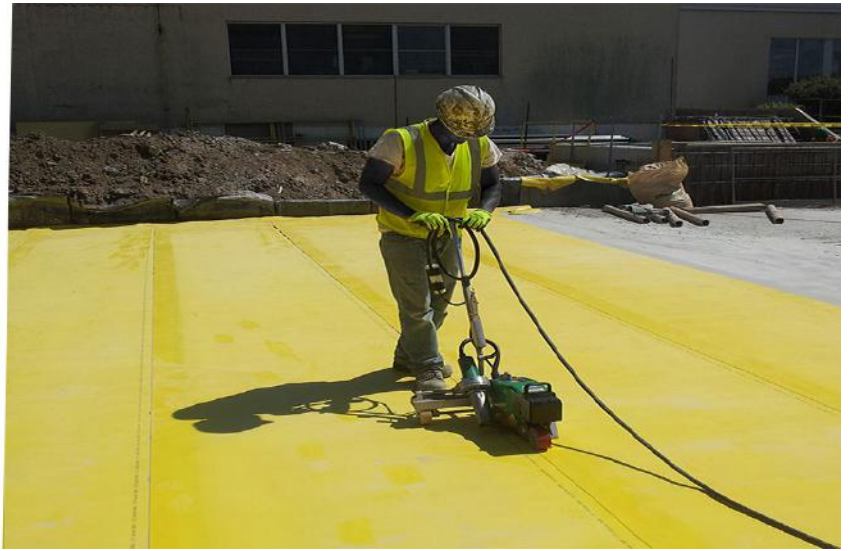
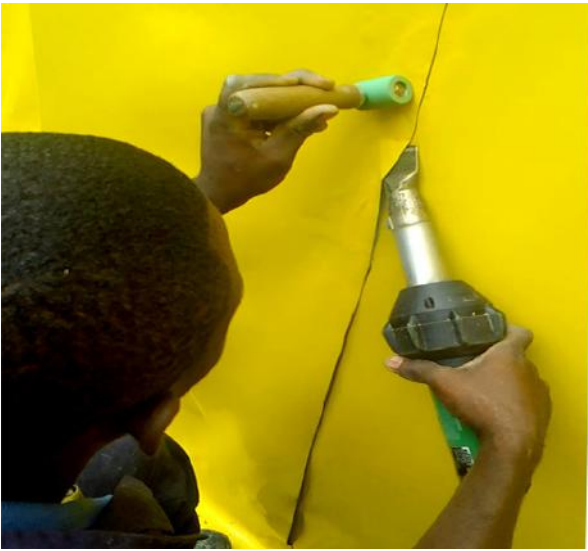
Longevity (Service
life no less than
60 years)



Resistance to
root penetration



Outstanding
weld-ability



APPLICATION METHOD

The membrane is loose laid on the walls, roofs and/or tunnel arches. Then the material is fixed mechanically with PVC roundels. Overlap seams are then welded by hot air welding equipment, either by a hand held hot air welding machine and pressure rollers or automatic hot air welding machines with temperature control.

CAUTION

Avoid any contact with materials containing bitumen or solvents. Direct contact with polymeric materials made of polystyrene (EPS, XPS) is also not advised.

PACKAGING

Since the membrane is a PVC-P based material, its qualities maybe distorted by exposure to Ultra-Violet (UV) radiation. Therefore each roll is wrapped in non-transparent polypropylene film.

STORAGE

Preferably rolls should be stored horizontally (lying down) on pallets in their original packing fully protected from moisture and the elements like direct sunlight, rain, and snow, with clean canvas tarpaulins.

NB: Maintain a minimum of 1 m from any and all sources of heat.

TRANSPORTATION

It should be transported in a covered vehicle, horizontally. Not more than three rows in height.



PRODUCT TECHNICAL DATA: PHYSICAL AND MECHANIAL SPECIFICATIONS

CHARACTERISTICS

PERFORMANCE

Tensile Strength, N/50mm	>=500
Mass per unit area, kg/m	>=1.550
Thickness, mm	1.00(+/-5%) 1.20(+/-5%) 1.50(+/-5%)
Water Permeability	No Penetration
Elongation, %	>=300
Resistance to tearing (Nail Shank), N	>=250
Dimension Stability, %	<=2.0
Reaction to fire	E
Root Resistance	No Penetration
Colours	Yellow, Black

DIMENSIONS

MEMBRANE THICKNESS, MM

WIDTH X LENGTH OF A ROLL, M

1.0	1.4 X 20
1.2	1.4 X 20
1.5	1.3 X 20

INSTALLATION PROCEDURES

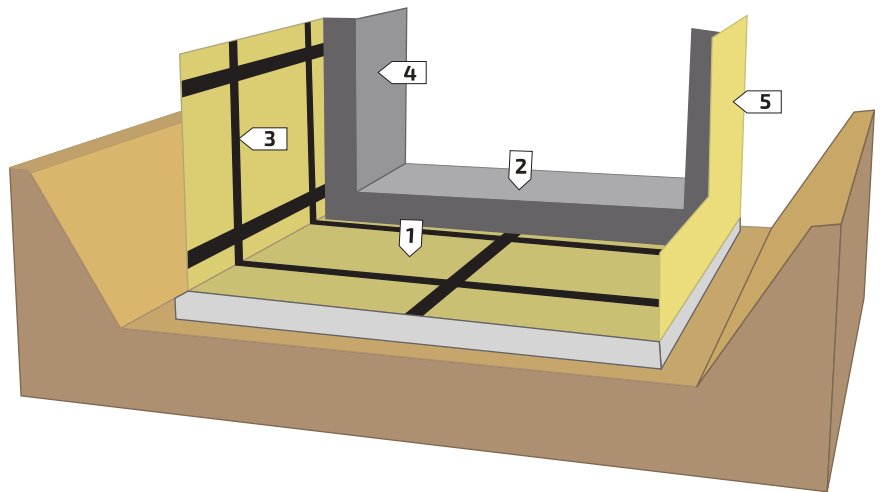
Depending on the type and method of excavation, the sequence for the installation of TEMBO®-UM membrane systems will be different and this must also be taken into consideration during the design phase.

OPEN CUT EXCAVATION METHOD

An open cut excavation with sloping sides or retaining walls with enough space for access to the structure, results in double-sided formwork for casting concrete walls. The waterbars are positioned and fixed into the formwork before concreting. The TEMBO®-UM membrane is welded to the waterbars after the concrete is placed and formwork is removed from the walls.

SEQUENCE OF INSTALLATION

- 1** Lining with the TEMBO®-UM membrane
- 2** Placing reinforcement and concreting the base slab.
- 3** Positioning the joint waterbars into the formwork for the walls.

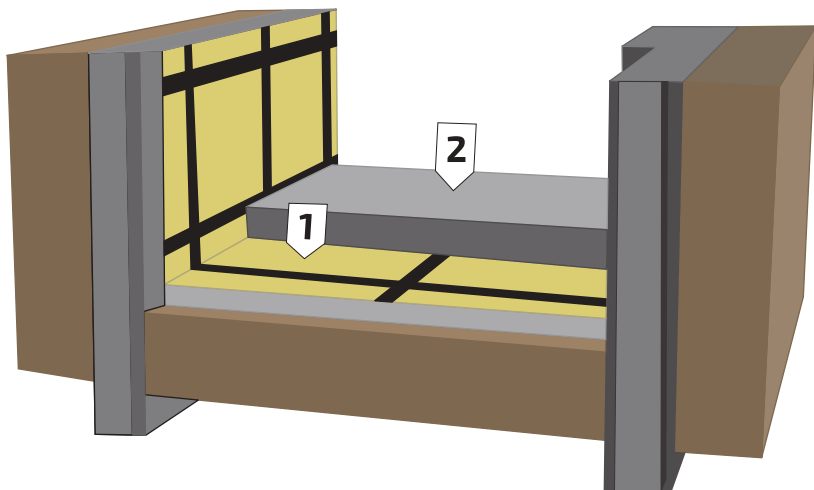


- 4** Concreting the walls.

- 5** Positioning and welding the TEMBO®-UM membrane around the walls.

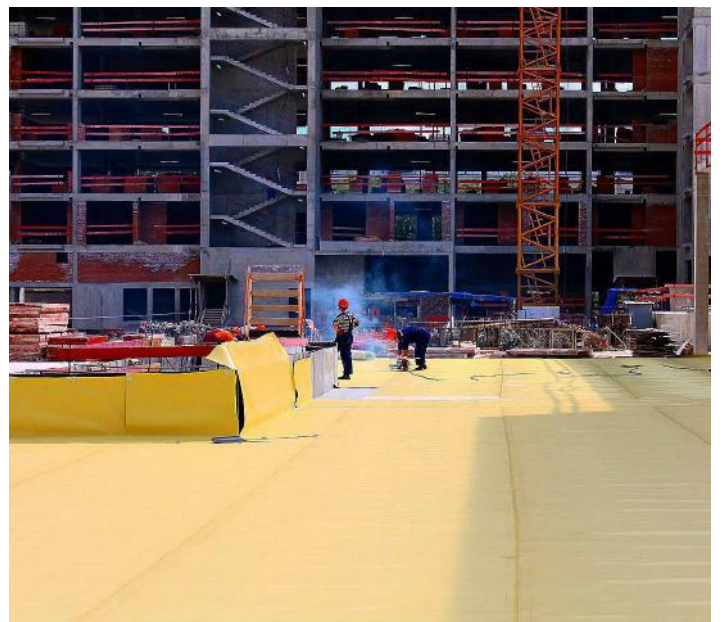
CONSTRUCTION WITH PILED / DIAPHRAGM WALLS

As there is no access to the outer side of the external walls using this method of construction, the entire TEMBO®-UM membrane system must be installed before placing the concrete. The fixing of single-sided formwork must then be done without damaging or penetrating the TEMBO®-UM membrane.

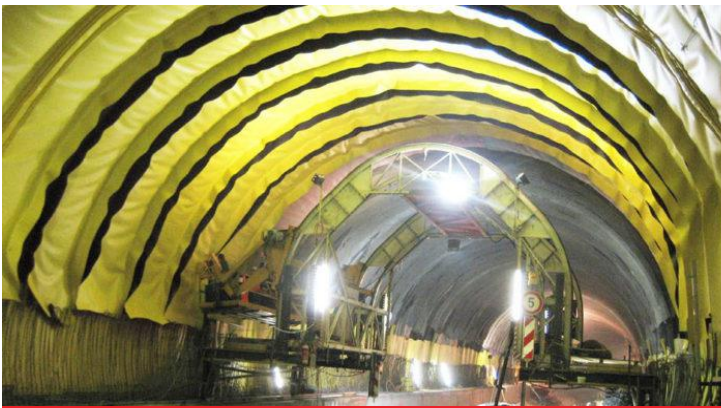
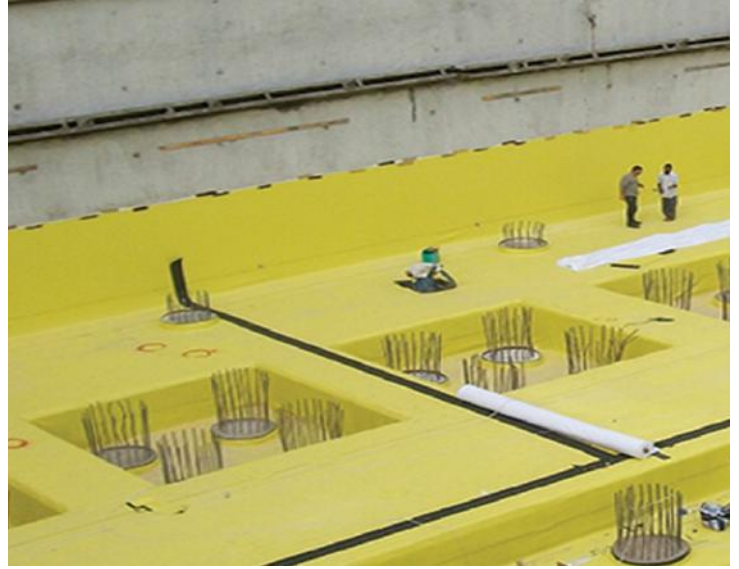


SEQUENCE OF INSTALLATION

- 1** Lining with the TEMBO®-UM membrane below the base slab and on the inside of the- retaining walls.
- 2** Concreting the base slabs and the wall.



Basement / Foundation Waterproofing



Road / Transit Tunnel



Wall



Nyali, Mombasa Project

REFERENCES / WATERPROOFING PROJECTS



Cell: +254 742 988 248 | 799 522 934

Email: sales@africapvc.com

Website: www.tembo.co.ke